



tennis specialty
fall/winter 2006

Reebok 



2006 Global Grand Slam Events and Key Athletes

Igor Andreev

Shahar Peer



Amelie Mauresmo



Nicolas Almagro



Nicole Vaidisova

2006 Grand Slam Events

Wimbledon

June 26 - July 9
The All England Lawn Tennis Club
London, England

U.S. Open

August 28 - September 10
Arthur Ashe Stadium
Flushing, New York

Technologies

Reebok provides a variety of technologies in tennis products to enhance the athlete's performance and comfort.

PLAYDRY

PLAYDRY is a moisture management system that helps keep you cooler, drier and more comfortable in both footwear and apparel.

PLAYDRY fabrications are used in all Reebok products bearing the PLAYDRY logo.

Moisture Management:

PLAYDRY performance fabrics are specially engineered in structure and content to allow performance to be built into the materials used to make PLAYDRY products.

Comfort: PLAYDRY materials move moisture away from your skin to the outer layer of the fabric for quick evaporation, leaving you drier and more comfortable.

Performance: PLAYDRY products with built in performance work for you, helping you remain cooler and drier in competition, training or other activities.



DMX FOAM



DMX Foam provides traditional cushioning and comfort.

DMX Foam is a Reebok proprietary formula of foam cushioning and

is placed in key locations in the midsole.

When placed closer to the ground the DMX Foam used is a higher durometer (firmer) foam for impact protection.

When placed closer to the foot the DMX Foam used is a lower durometer (softer) foam to promote comfort.

DMX SHEAR



DMX Shear provides horizontal cushioning by allowing the heel of the shoe to move independently from the rest of the

shoe, cushioning both vertically (as in traditional footwear) and horizontally.

This shearing action absorbs and smooths some of the horizontal braking that occurs when an athlete's heel strikes the ground and extends the amount of time the heel stays on the ground, lowering overall impact forces.

THE PUMP-MANUAL



fit and every pump shoe is a custom shoe.

The Pump provides custom fit by surrounding the foot with an adjustable, form fitting air chamber. Inflating the chamber by pumping The Pump ball causes it to form to the exact shape of the athlete's foot so each fit is a custom

Match Point premier series **NEW**

Feature	Consumer Benefit
DMX Shear Max Plus	Maximum vertical/horizontal cushioning, reduces stress of heel impact
Open weave mesh upper	Breathability and support
Ventilated Transition Bridge	Breathability, heel-to-toe transition
IMEVA midsole	Cushioning
Removable, ventilated PU sockliner	Extraordinary cushioning, breathability, accommodates orthotics
Forefoot flex grooves	Flexibility
Latitudinal flex canal	Flexibility
PLAYDRY lining	Moisture management
Anatomically engineered outsole	High performance
Herringbone outsole	Traction

Men's Sizes: 6.5 - 14, 15

a. 158417 white/athletic navy/silver/new flash red mesh

b. 153835 black/silver/relay red mesh

c. 160268 white/athletic navy/silver mesh

Intro Date: 6/2006**R0055****Suggested Retail \$99.99****3D Premier Pro premier series**

Feature	Consumer Benefit
DMX Lite	Lightweight cushioning
Leather/synthetic upper	Soft, supportive comfort
Upper support design	Lateral support and stability
Transition Bridge, external heel cup	Heel-to-toe transition
IMEVA midsole	Cushioning
Molded sockliner	Comfort, cushioning and durability
Removable EVA sockliner	Accommodates orthotics
Forefoot flex grooves	Flexibility
Carbon rubber heel strike	Durable traction
Herringbone outsole	Traction

Men's Sizes: 6.5 - 14, 15

a. 148590 white/black

b. 131542 white/reebok navy/eastern red/silver

c. 149263 white/lizard

R0594**Suggested Retail \$89.99****Vector Pro TS premier series** **NEW**

Feature	Consumer Benefit
6-month performance and comfort guarantee	Customer satisfaction
DMX Foam	Cushioning
Full-grain leather upper	Soft, supportive comfort
Ventilated Transition Bridge	Breathability, heel-to-toe transition
IMEVA midsole	Cushioning
Removable, ventilated PU sockliner	Extraordinary cushioning, breathability, accommodates orthotics
Forefoot flex grooves	Flexibility
PLAYDRY lining	Moisture management
High abrasion rubber outsole	Durability
Herringbone outsole	Traction

Men's Sizes: 6.5 - 14, 15

a. 158665 white/athletic navy - 6/2006

b. 158666 white/steel/triathlon red - 6/2006

c. 158677 white/racing green - 10/2006

Intro Date: See colorways above**R0044****Suggested Retail \$79.99****Netmaster II DMX 6 performance**

Feature	Consumer Benefit
DMX 6 technology	Ultimate heel-focused cushioning provided by six-pod air transfer system
Reebok performance 1 outsole compound	Long-lasting durability
Ghillie lacing system	Secure, quick lacing
Padded tongue and collar	Internal comfort
Herringbone outsole	Multi-surface play

Men's Sizes: 6.5 - 14, 15

a. 156769 white/black/triathlon red - 7/2006

b. 141771 white/reebok navy/sheer grey

Intro Date: See color update above**R0594****Suggested Retail \$89.99**

**Drop Shot Pro performance**

Feature	Consumer Benefit
DMX Shear LP	Vertical/horizontal cushioning, reduces stress of heel impact
Leather athletic upper	Soft, supportive comfort
IMEVA midsole	Cushioning
Removable EVA sockliner	Accommodates orthotics
Forefoot flex grooves	Flexibility
Carbon rubber heel strike	Durable traction
Herringbone outsole	Traction
Low-cut design	Added mobility

Men's Sizes: 6.5 - 14, 15

- a. 156077 white/shark - 7/2006
 b. 150101 white/athletic navy/flash red - 7/2006
 c. 150147 white/super blue/cloud grey
 d. 148287 white/athletic navy/cloud grey
 e. 148288 white/cloud grey/metallic silver

Intro Date: See color updates above
R5214

Suggested Retail \$74.99

**Centre Court II Lite performance NEW**

Feature	Consumer Benefit
DMX Lite	Lightweight cushioning
Leather/mesh upper	Comfort, support and breathability
Upper support design	Lateral support and stability
TPU heel clip	Rearfoot support and stability
Forefoot flex grooves	Flexibility
Removable EVA sockliner	Accommodates orthotics
Multi-surface outsole	Traction
Low-cut design	Added mobility

Men's Sizes: 6.5 - 14, 15

- a. 160271 white/athletic navy/triathlon red

Intro Date: 6/2006
R0583

Suggested Retail \$69.99

**Vintage post-match**

Feature	Consumer Benefit
Soft leather upper	Soft, supportive comfort
IMEVA midsole	Cushioning
Removable sockliner	Accommodates orthotics
Carbon rubber heel strike	Durable traction
Herringbone outsole	Traction
Low-cut design	Added mobility

Men's Sizes: 6.5 - 14, 15

- a. 145935 white/athletic navy
 b. 145931 white/shiraz

R5753

Suggested Retail \$64.99

**Mojo Sandal sandals**

Feature	Consumer Benefit
One piece IMEVA sandal	Lightweight cushioning
Sculpted footbed	Comfortable and non-slip
Lugged outsole	Traction
Rubber plug outsole	Traction and durability
HydroPass portals	Water drainage system

Unisex Sizes: 4 - 15 (whole sizes)

- a. 116005 black

R0011

Suggested Retail \$19.99

Match Point premier series **NEW**

Feature	Consumer Benefit
DMX Shear Max Plus	Maximum vertical/horizontal cushioning, reduces stress of heel impact
Open weave mesh upper	Breathability and support
Ventilated Transition Bridge	Breathability, heel-to-toe transition
IMEVA midsole	Cushioning
Removable, ventilated PU sockliner	Extraordinary cushioning, breathability, accommodates orthotics
Forefoot flex grooves	Flexibility
Latitudinal flex canal	Flexibility
PLAYDRY lining	Moisture management
Anatomically engineered outsole	High performance
Herringbone outsole	Traction

Women's Sizes: 5 - 12

a. 153838 white/athletic navy/acid lime mesh

b. 156766 white/chiffon/silver mesh

c. 158399 white/athletic navy/silver mesh

Intro Date: 6/2006**R0055****Suggested Retail \$99.99****Vector Pro TS premier series** **NEW**

Feature	Consumer Benefit
6-month performance and comfort guarantee	Customer satisfaction
DMX Foam	Cushioning
Full-grain leather upper	Soft, supportive comfort
Ventilated Transition Bridge	Breathability, heel-to-toe transition
IMEVA midsole	Cushioning
Removable, ventilated PU sockliner	Extraordinary cushioning, breathability, accommodates orthotics
Forefoot flex grooves	Flexibility
PLAYDRY lining	Moisture management
High abrasion rubber outsole	Durability
Herringbone outsole	Traction

Women's Sizes: 5 - 12

a. 158667 white/chiffon - 6/2006

b. 158668 white/steel - 6/2006

c. 158678 white/blue fog/silver - 10/2006

Intro Date: See colorways above**R0044****Suggested Retail \$79.99****Netmaster II DMX 6 performance**

Feature	Consumer Benefit
DMX 6 technology	Ultimate heel-focused cushioning provided by six-pod air transfer system
Reebok performance 1 outsole compound	Long-lasting durability
Ghillie lacing system	Secure, quick lacing
Padded tongue and collar	Internal comfort
Herringbone outsole	Multi-surface play

Women's Sizes: 5 - 12

a. 153889 white/violet dust - 7/2006

b. 148527 white/artesian blue

c. 141773 white

d. 141772 white/pink rose

Intro Date: See color update above**R0594****Suggested Retail \$89.99****Drop Shot Pro performance**

Feature	Consumer Benefit
DMX Shear LP	Vertical/horizontal cushioning, reduces stress of heel impact
Leather athletic upper	Soft, supportive comfort
IMEVA midsole	Cushioning
Removable EVA sockliner	Accommodates orthotics
Forefoot flex grooves	Flexibility
Carbon rubber heel strike	Durable traction
Herringbone outsole	Traction
Low-cut design	Added mobility

Women's Sizes: 5 - 12

a. 153866 white/frost blue/bondi blue/silver - 7/2006

b. 156213 white/cranberry - 7/2006

c. 150102 white/acid lime/silver

d. 150104 white/prism pink/silver

e. 148289 white/cloud grey/metallic silver

f. 148291 white/artesian blue/cloud grey

Intro Date: See color updates above**R5214****Suggested Retail \$74.99**

**Centre Court II Lite** performance **NEW**

Feature	Consumer Benefit
DMX Lite	Lightweight cushioning
Leather/mesh upper	Comfort, support and breathability
Upper support design	Lateral support and stability
TPU heel clip	Rearfoot support and stability
Forefoot flex grooves	Flexibility
Removable EVA sockliner	Accommodates orthotics
Multi-surface outsole	Traction
Low-cut design	Added mobility

Women's Sizes: 5 - 12
a. 160274 white/cielo/silver
b. 160278 white/silver/juicy pink

Intro Date: 6/2006
R0583

Suggested Retail \$69.99

**Vintage** post-match

Feature	Consumer Benefit
Soft leather upper	Soft, supportive comfort
IMEVA midsole	Cushioning
Removable sockliner	Accommodates orthotics
Carbon rubber heel strike	Durable traction
Herringbone outsole	Traction
Low-cut design	Added mobility

Women's Sizes: 5 - 12
a. 145947 artesian blue/white
b. 145944 white/aquamarine

R5753

Suggested Retail \$64.99

**Court Master II** indoor court

Feature	Consumer Benefit
Soft synthetic upper	Ball feel, comfort and performance
Upper support design	Lateral support and stability
IMEVA midsole	Cushioning
Removable EVA sockliner	Accommodates orthotics
Herringbone outsole	Traction
Low-cut design	Added mobility

Unisex Sizes: 5 - 13, 14, 15

Women's Sizes: 5 - 12
unisex women
a. 153587 white/steel/ion/gum - 7/2006
b. 153680 white/silver/black/hot green - 7/2006
c. 159045 white/steel - 7/2006
d. 138500 159046 white/athletic navy/silver/gum
e. 135324 159047 white/eastern red/gold/gum
f. 138499 white/black/carbon/gum/silver

Intro Date: See color updates above
R5203

Suggested Retail \$54.99

**VB Load DMX** indoor court

Feature	Consumer Benefit
DMX Flow Pak	Moving cushioning, load distribution, natural footstrike
Microcirc Zone	Disperses pressure under ball of foot
Leather/mesh upper	Supportive, soft and breathable
Polyurethane sockline	Long-lasting cushioning and comfort
Sculpted shank	Lightweight and flexible
Rubber/gum outsole	Exceptional traction

Women's Sizes: 5 - 12
a. 107010 white/silver/navy
b. 104648 white/silver/black

R0583

Suggested Retail \$69.99

Premier Road Lite DMX IV running premier NEW

Feature	Consumer Benefit
DMX Shear	Vertical/horizontal cushioning, reduces stress of heel impact
DMPRTEK rubber outsole	Cushioning, traction and durability
3D Plus	Cushioning
Transition Bridge	Heel-to-toe transition
FF EVA lasting	Enhanced comfort, added cushioning
CMEVA midsole	Stability and cushioning
Removable EVA sockliner	Accommodates orthotics
3M Scotchlite® material	Night running safety
Open weave mesh upper	Breathability and support
PLAYDRY lining	Moisture management

Men's Sizes: 8 - 14, 15

- a. 150236 jetty/white/flash yellow/silver/black
 b. 150237 relay red/white/black/silver
 c. 150235 steel/white/spectrum yellow/platinum/silver/black
 d. 150234 white/silver/ion/black

Intro Date: 7/2006**R5225****Suggested Retail \$94.99****Premier Road Lite DMX IV running premier NEW**

See above for features/benefits

Women's Sizes: 5 - 12

- a. 152940 hot green/white/silver/black
 b. 150242 bondi blue/silver/black/white
 c. 152942 clear grey/relay red/platinum/white/black
 d. 152946 white/cranberry/silver/chiffon

Intro Date: 7/2006**R5225****Suggested Retail \$94.99****Premier Road Plus DMX III running premier**

Feature	Consumer Benefit
DMX Foam	Cushioning
CMEVA midsole	Stability and cushioning
DMPRTEK rubber outsole (lateral)	Cushioning, traction and durability
Transition Bridge	Smooth heel-to-toe transition
FF EVA lasting	Added cushioning and comfort
Dual density medial post	Stability
Removable sockliner	Accommodates orthotics
3M Scotchlite® material	Night running safety
PLAYDRY lining	Moisture management
Open weave mesh upper	Breathability and support
Width sizing	Custom fit

Men's Sizes: 8 - 14, 15**Men's Wide Sizes: 8 - 14, 15, 16, 17, 18, 19**

- a. 153112 athletic navy/white/spectrum yellow - 7/2006
 b. 144341 jetty/sport grey/white/flash yellow
 c. 149653 white/silver/athletic navy/flash red
 d. 147247 148565 white/silver/speed blue/black

Intro Date: See color update above**R5764****Suggested Retail \$84.99****Premier Road Plus DMX III running premier**

See above for features/benefits

Women's Sizes: 5 - 12

- a. 150208 cranberry/platinum/white/silver/chiffon - 7/2006
 b. 144346 sport grey/white/lemonade/jetty/silver
 c. 149651 white/silver/acid lime/jetty
 d. 144344 148566 white/silver/c. blue/jetty

Intro Date: See color update above**R5764****Suggested Retail \$84.99**

PLAYDRY


Rbk Series Flurry Jacket
ARMT6014

A Classic Tennis Warm Up Jacket that features PLAYDRY tricot fabrication with mesh panel detail for ultimate moisture management and increased air flow to keep you cooler, drier and comfortable. Additional features are dual locking front pockets, rib knit waist and a locking chest pocket. The logo treatment is a heat transfer Rbk and Vector logo, 100% polyester tricot.

Size: S, M, L, XL, XXL

912 crete/white
 100 white/white
 469 celsius/white*

Availability Date: 7/1/2006, *9/1/2006
R0053
Suggested Retail \$70.00

PLAYDRY


Rbk Series Flurry Pant
ARMT6015

A excellent compliment to the Tennis Warm Up Jacket that features PLAYDRY tricot fabrication with mesh panel detail for ultimate moisture management and increased air flow to keep you cooler, drier and comfortable. Additional features are dual front pockets, elasticized waist and 10" locking zip cuffs. The logo treatment is a heat transfer Rbk and Vector logo, inseam 31", 100% polyester tricot.

Size: S, M, L, XL, XXL

005 black/white
 041 platinum/white
 469 celsius/white*

Availability Date: 7/1/2006, *9/1/2006
R0003
Suggested Retail \$60.00

PLAYDRY


Rbk Series Tech Pullover
ARMT6020

This will become your favorite pullover. PLAYDRY technology for excellent moisture management and wicking performance make this an ideal warm up layer. Featuring a soft self-fabric collar, a 10" locking zip close placket, a raglan sleeve and finished hem construction for ideal comfort. The logo treatment is a heat transfer Rbk and Vector logo, 100% polyester.

Size: S, M, L, XL, XXL

912 crete/white
 100 white/black
 005 black/white*
 469 celsius/white*

Availability Date: 7/1/2006, *9/1/2006
R0003
Suggested Retail \$60.00

PLAYDRY

Rbk
 TENNIS

Rbk Tennis Tech Tee
ARMT6029

A PLAYDRY moisture management fabrication for that dry cool comfort, this Rbk Tech Tee features a hi-density Rbk graphic and tonal print "Tennis", self-fabric neck tape and set-on sleeve detail, 100% polyester interlock.

Size: S, M, L, XL, XXL

912 crete
 313 hot green
 100 white
 469 celsius/tiger orange*

Availability Date: 7/1/2006, *9/1/2006
R0521
Suggested Retail \$25.00

Rbk Series Flurry Polo
ARMT6016

A true performance polo with engineered body mapped pattern for front to back venting to optimize airflow and cooling. This polo features flat seam construction, a locking zip placket and PLAYDRY technology for excellent moisture management and wicking performance. The construction consists of a soft self-fabric collar and seamless color detail. The logo treatment is a heat transfer Rbk and Vector logo, 100% polyester.

Size: S, M, L, XL, XXL

912 crete/white
041 platinum/white
005 black/white
100 white/white
469 celsius/tiger orange*

Availability Date: 7/1/2006, *9/1/2006
R0052

Suggested Retail \$50.00**Rbk Series Flurry Short**
ARMT6018

An excellent update to the classic woven short with the addition of spandex. This stretch woven short features a elasticized 2" drawstring waist, 100% polyester.

Size: S, M, L, XL, XXL

912 crete/white
005 black/white
100 white/white
469 celsius/white*
112 white/tiger orange*

Availability Date: 7/1/2006, *9/1/2006
R0071

Suggested Retail \$34.00**Rbk Series Flurry Crew**
ARMT6017

An engineered body mapped crew with front to back venting for increased airflow and cooling. This crew features flat seam construction, a locking zip entry, seamless color detail and PLAYDRY technology for excellent moisture management and wicking performance. The logo treatment is a heat transfer Rbk and Vector logo, 100% polyester.

Size: S, M, L, XL, XXL

912 crete/white
005 black/white
313 hot green/white
100 white/white
866 tiger orange/white*

Availability Date: 7/1/2006, *9/1/2006
R0052

Suggested Retail \$50.00**Rbk Series Knit Flurry Short**
ARMT6019

An ideal players short. PLAYDRY tricot fabrication with mesh panel detail for ultimate moisture management and increased air flow to keep you cooler, drier and comfortable. Additional features of dual front mesh lined pockets and a 2" drawstring elasticized waist. The logo treatment is a heat transfer Rbk logo, inseam: 9", 100% polyester tricot.

Size: S, M, L, XL, XXL

912 crete/white
005 black/white
041 platinum/white
100 white/white
469 celsius/white*

Availability Date: 7/1/2006, *9/1/2006
R0091

Suggested Retail \$38.00



Vector Sweep Suit ARMT6021

A Classic ultra-soft Tennis Warm Up suit that features overlay mesh inserts and lining. Additional features of dual front zip pockets on both jacket and pant, self-fabric elasticized cuffs and drawstring waist, 10" leg zip cuffs and a full zip front entry. The logo treatment is an embroidered Vector logo, inseam: 31", 100% polyester.

Size: S, M, L, XL, XXL

005 black/crete
100 white/black
866 tiger orange/celsius*

Availability Date: 7/1/2006, *9/1/2006
R0574

Suggested Retail \$95.00

Apparel

MEN / VECTOR TENNIS



Vector Sweep Polo ARMT6022

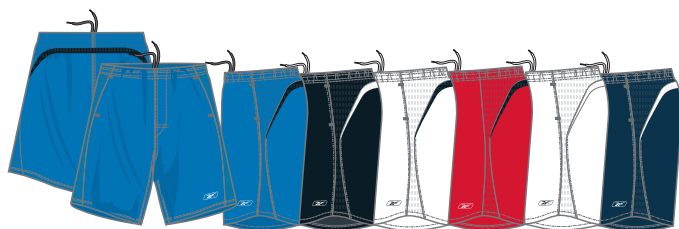
A PLAYDRY mesh technology polo for excellent moisture management and wicking performance. This polo features locking zip front placket, a self-fabric collar and shaped seams for reduced abrasion and comfort. The logo treatment is a heat transfer Vector logo, 100% polyester.

Size: S, M, L, XL, XXL

912 crete/black
005 black/white
629 relay red/black
100 white/white
469 celsius/white*
866 tiger orange/white*

Availability Date: 7/1/2006, *9/1/2006
R0081

Suggested Retail \$36.00



Vector Sweep Knit Short ARMT6026

The best all purpose training and playing short. Featuring PLAYDRY technology for excellent moisture management and wicking performance, dual front mesh lined pockets, a 1.5" drawstring elasticized waist and mesh paneling for increased airflow and comfort. The logo treatment is a heat transfer Vector logo, 100% polyester interlock.

Size: S, M, L, XL, XXL

912 crete/black
005 black/white
106 white/black
629 relay red/black
100 white/white
469 celsius/white*

Availability Date: 7/1/2006, *9/1/2006
R0571

Suggested Retail \$35.00

9

A PLAYDRY moisture management fabrication for that dry cool comfort, this Vector Court Tech Tee features gel and tonal printing techniques, self-fabric neck tape and set-on sleeve detail, 100% polyester interlock.

912 crete
005 black
100 white
469 celsius*
866 tiger orange*

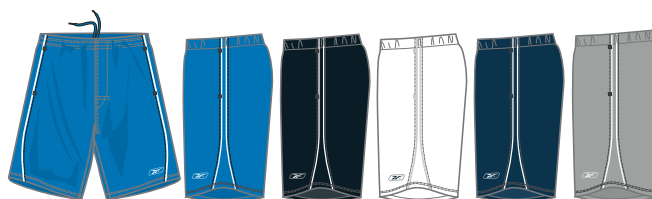
Suggested Retail \$25.00



A timeless woven tennis short with super soft-touch fabrication. This textured woven features dual pockets, a zip close back pocket, 1.5" drawstring elasticized waist and contrast piping. The logo treatment is a heat transfer Vector logo. 100% polyester twill.

912 crete/white
005 black/white
100 white/white
469 celsius/white*
041 platinum/white*

Suggested Retail \$30.00

[illegible]



PLAYDRY Long Sleeve Tee
ARMP4052

Looking for that additional coverage for those cooler days? The PLAYDRY Long Sleeve Tee is ideal. Featuring ultimate moisture management and wicking properties, a self-fabric collar and cuff, finished hem, reflective Vector heat transfer logo treatment, 100% polyester PLAYDRY interlock.

Size: S, M, L, XL, XXL

100 white
005 black
417 navy
041 platinum
629 relay red
912 crete
469 celsius
866 tiger orange*

Availability Date: 7/1/2006, *9/1/2006

R0041

Suggested Retail \$28.00



PLAYDRY Short Sleeve Tee
ARMP4051

The most versatile PLAYDRY Performance Tee of the collection. Featuring ultimate moisture management and wicking properties, a self-fabric collar and cuff, finished hem, reflective Vector heat transfer logo treatment, 100% polyester PLAYDRY interlock.

Size: S, M, L, XL, XXL

100 white
005 black
417 navy
041 platinum
629 relay red
912 crete
469 celsius
866 tiger orange*

Availability Date: 7/1/2006, *9/1/2006

R0521

Suggested Retail \$25.00



PLAYDRY Sleeveless Tee
ARMP4050

A sleeveless version of our most versatile PLAYDRY Performance Tee collection. Featuring ultimate moisture management and wicking properties, a self-fabric collar and cuff, finished hem, reflective Vector heat transfer logo treatment, 100% polyester PLAYDRY interlock.

Size: S, M, L, XL, XXL

100 white
005 black
417 navy
041 platinum
629 relay red
912 crete
866 tiger orange*

Availability Date: 7/1/2006, *9/1/2006

R0011

Suggested Retail \$22.00

Notes

**PLAYDRY Training Short
ARMP6042**

When your workout takes you from the gym to the courts, the Vector Training Short is ideal for any sport. This short features an ultra soft touch PLAYDRY shell and a PLAYDRY anti-microbial crepe brief with the ultimate in moisture management and wicking properties and dual onseam pockets. The logo treatment is a reflective Vector heat transfer, inseam 8", 100% polyester.

Size: S, M, L, XL, XXL

041 platinum/white
005 black/platinum
469 celsius/white
912 crete/relay red
866 tiger orange/platinum*

Availability Date: 7/1/2006, *9/1/2006

R0041

Suggested Retail \$28.00

**Velocity Training Short
ARMP5116**

Perfect for any sport. This short features an ultra soft touch microfiber shell, dual onseam pockets, external locker key zip-close storage, reflective Vector heat transfer logo treatment and a PLAYDRY anti-microbial crepe brief with the ultimate in moisture management and wicking properties, inseam: 5", 100% polyester microfiber.

Size: S, M, L, XL, XXL

005 black
041 platinum
409 athletic navy
912 crete
629 relay red
100 white
866 tiger orange*

Availability Date: 7/1/2006, *9/1/2006

R0041

Suggested Retail \$28.00

**VS Short Sleeve Comp Hot Tee
ARMP5118**

Tight, sleek fit gives the feel of working out with an extra soft shell. PLAYDRY fabric offers ultimate moisture management and wicking performance, reflective Vector heat transfer logo treatment, 79/21 polyester/spandex PLAYDRY compression.

Size: S, M, L, XL, XXL

100 white
001 black
417 navy
629 relay red
041 platinum
469 celsius
912 crete
065 heather grey
866 tiger orange*

Availability Date: 7/1/2006, *9/1/2006

R0511

Suggested Retail \$23.00

**VS Comp Hot Sleeveless Top
ARMP5119**

Tight, sleek fit gives the feel of working out with an extra soft shell. PLAYDRY fabric offers ultimate moisture management and wicking performance, reflective Vector heat transfer logo treatment, 79/21 polyester/spandex PLAYDRY compression.

Size: S, M, L, XL, XXL

100 white
001 black
417 navy
629 relay red
041 platinum
912 crete
065 heather grey
866 tiger orange*

Availability Date: 7/1/2006, *9/1/2006

R0001

Suggested Retail \$20.00





Vector Stretch Short
ARMP5128

Flat seam construction creates a seamless feel and decreased chances for chaffing and irritation. PLAYDRY fabric offers ultimate moisture management and wicking performance. Elasticized drawstring waist, internal key pocket, embroidered Vector logo treatment, inseam: 8", 82/18 polyester/spandex.

Size: S, M, L, XL, XXL
041 platinum
409 athletic navy
005 black
469 celsius*

Availability Date: 7/1/2006, *9/1/2006
R0521

Suggested Retail \$25.00



VS Comp Short
ARMP5120

Updated with flat seam construction creates a seamless feel and decreased chances for chaffing and irritation. PLAYDRY fabric offers ultimate moisture management and wicking performance. Elasticized drawstring waist, internal key pocket, reflective Vector heat transfer logo treatment, inseam: 8", 90/10 polyester/spandex PLAYDRY compression.

Size: S, M, L, XL, XXL
100 white
001 black
417 navy
065 heather grey

Availability Date: 7/1/2006
R0011

Suggested Retail \$22.00



Vector Compression Brief
ARMP5181

Tight, athletic fit to reduce muscle fatigue, elasticized jacquard waistband. PLAYDRY fabric offers ultimate moisture management and wicking performance, heat transfer Vector logo treatment, 90/10 polyester/spandex.

Size: S, M, L, XL, XXL
100 white
005 black
409 athletic navy
065 heather grey

Availability Date: 7/1/2006
R0001

Suggested Retail \$20.00

Notes

Rbk Match Day Jacket
ARWT6015

Modern meets classic with this warm up jacket that features knit argyle fabrication, dual front zipper pockets with modern design lines, a full front zip entry, heat transfer Rbk logo at left chest, 97/3 polyester/spandex raschel knit.

Size: XS, S, M, L, XL, XXL
 100 white

Availability Date: 7/1/2006
R0004

Suggested Retail \$80.00

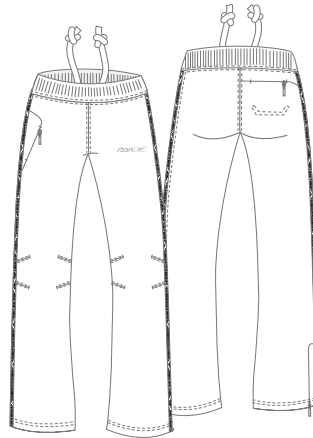

Rbk Match Day Pant
ARWT6016

Goes perfect with the Rbk Match Day Jacket, this polyester pique pant offers comfort as well as PLAYDRY technology, argyle jaquard piping along the legs, zippers at bottom hems, articulation in knee, front and back zipper pocket storage, reflective Rbk heat transfer logo on left hip, 100% polyester pique.

Size: XS, S, M, L, XL, XXL
 100 white

Availability Date: 7/1/2006
R0523

Suggested Retail \$65.00


Rbk Match Day Polo
ARWT6019

A classic silhouette in tennis, this polo offers a front zipper for cooling, comfortable polyester pique body with jaquard argyle at sleeves, argyle piping along sides of the body, PLAYDRY technology, reflective Rbk logo at left chest, 92/8 polyester/spandex pique.

Size: XS, S, M, L, XL, XXL

100 white

444 frost blue

866 tiger orange

515 power purple*

599 pale violet*

S

S

Availability Date: 7/1/2006, *9/1/2006
R0052

Suggested Retail \$50.00


Rbk Match Day Dress
ARWT6017

A modern design in a classic silhouette. This Rbk tennis dress is designed to make a statement on court with a great knit argyle fabrication, full shelf bra-liner, jaquard inserted pleated skirt, PLAYDRY technology, 92/8 polyester/spandex pique.

Size: XS, S, M, L, XL, XXL

100 white

444 frost blue

515 power purple*

Availability Date: 7/1/2006, *9/1/2006

R0523

Suggested Retail \$65.00




Rbk Match Day Top
ARWT6018

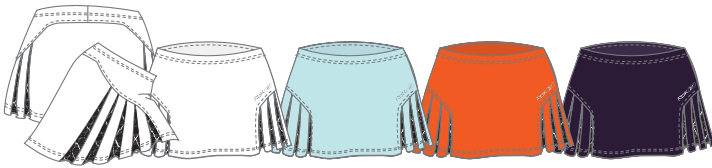
Supportive tennis bra top that offers front zipper for cooling, full support shell-bra, jacquard argyle fabrication used in combination with polyester pique, PLAYDRY technology, reflective Rbk heat transfer logo at left chest, 92/8 polyester/spandex pique.

Size: XS, S, M, L, XL, XXL

100 white
444 frost blue
866 tiger orange
599 pale violet*
596 opium*

Availability Date: 7/1/2006, *9/1/2006
R0522

Suggested Retail \$45.00


Rbk Match Day Skirt
ARWT6021

This pleated skirt is perfect for a flirty look on court, featuring jacquard argyle pleats with polyester pique body, contrast color in pleats, flat pull on waistband construction, reflective heat transfer logo at left hip, PLAYDRY technology, 92/8 polyester/spandex pique.

Size: XS, S, M, L, XL, XXL

100 white
444 frost blue
866 tiger orange
596 opium*

Availability Date: 7/1/2006, *9/1/2006
R0052

Suggested Retail \$50.00


Rbk 3/4 Sleeve Top
ARWT6028

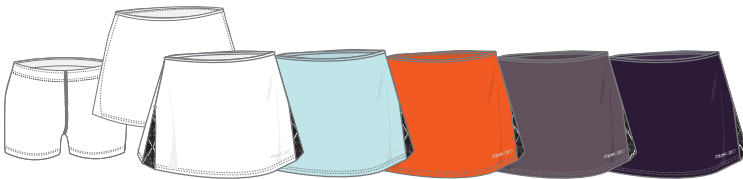
Comfortable 3/4 sleeve top is perfect to wear on court during cooler matches. Offering modern cut lines, contrast colorblocking and piping, PLAYDRY technology, reflective Rbk logo at left chest, 92/8 polyester/spandex pique.

Size: XS, S, M, L, XL, XXL

100 white/white
112 white/frost blue
116 white/opium*

Availability Date: 7/1/2006, *9/1/2006
R0002

Suggested Retail \$40.00


Rbk Game Point Skirt
ARWT6029

This flattering and slim fitting skirt offers dual fabrication with polyester pique as well as jacquard argyle fabrication, PLAYDRY technology, reflective Rbk logo at bottom left hem, 92/8 polyester/spandex pique.

Size: XS, S, M, L, XL, XXL

100 white
444 frost blue
866 tiger orange
515 power purple*
596 opium*

Availability Date: 7/1/2006, *9/1/2006
R0052

Suggested Retail \$50.00

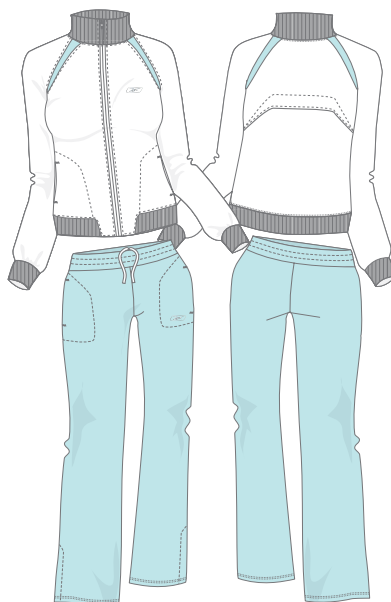
Centre Court Suit ARWT6022

This woven tennis warm up suit offers contrast color panels, front storage pockets, back vent panel, mesh lining, reflective heat transfer logo at left chest, 100% polyester dobby.

Size: XS, S, M, L, XL, XXL
100 white/frost blue

Availability Date: 7/1/2006
R0524

Suggested Retail \$85.00



Centre Court Polo ARWT6024

The most popular silhouette in tennis, this polo is a combination of stretch mesh and polyester Lycra® spandex jersey, PLAYDRY technology for excellent moisture management, open placket, contrast colorblocking, self-fabric collar, reflective logo at left chest, 88/12 polyester/spandex jersey.

Size: XS, S, M, L, XL, XXL
100 white
444 frost blue/white
867 clementine/white
409 athletic navy/white
599 pale violet/white*
758 citrus yellow/white*
665 gypsy pink/white*

Availability Date: 7/1/2006, *9/1/2006
R0002

Suggested Retail \$40.00



Centre Court Short Sleeve ARWT6026

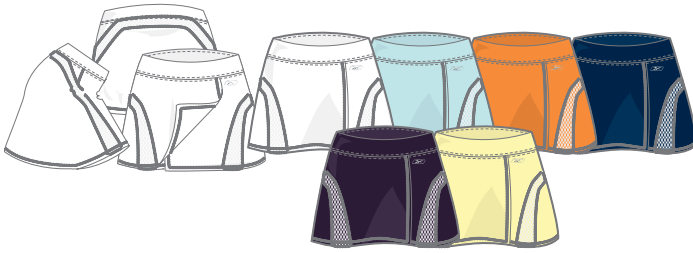
A versatile short sleeve top with the perfect combination of fabrications, PLAYDRY technology for excellent moisture management and wicking, cap sleeves, mesh paneling built-in for breathability, contrast colorblocking, reflective logo at left chest, 88/12 polyester/Lycra® spandex jersey.

Size: XS, S, M, L, XL, XXL
100 white
444 frost blue
867 clementine
599 pale violet*
758 citrus yellow*

Availability Date: 7/1/2006, *9/1/2006
R0571

Suggested Retail \$35.00





Centre Court Skort ARWT6025

This flirty skort has all of the details needed for on the court. Offering built-in shorts for added coverage, stretch mesh paneling for breathability, contrast colorblocking details, contoured waistband, PLAYDRY technology, reflective logo at left hip, 88/12 polyester/Lycra® spandex.

Size: XS, S, M, L, XL, XXL

100 white
444 frost blue
867 clementine
409 athletic navy
596 opium*
758 citrus yellow*

Availability Date: 7/1/2006, *9/1/2006
R0042

Suggested Retail \$48.00



Centre Court Dress ARWT6023

The ideal tennis dress. A combination of stretch mesh and polyester spandex jersey, offers full support shelf bra-liner, princess seaming fit lines, mesh panel in back for cooling, PLAYDRY technology, reflective heat transfer logo at left chest, 90/10 polyester/spandex.

Size: XS, S, M, L, XL, XXL

100 white

Availability Date: 7/1/2006
R0003

Suggested Retail \$60.00



Centre Court Support Short ARWT6011

A performance short featuring all the details a real player needs. Built-in compression short, PLAYDRY technology for excellent moisture management and wicking, embroidered Vector logo treatment, outseam: 3", 82/18 polyester/spandex.

Size: XS, S, M, L, XL, XXL

100 white
444 frost blue
409 athletic navy
515 power purple*
005 black*

Availability Date: 7/1/2006, *9/1/2006
R0522

Suggested Retail \$45.00

Notes

PLAYDRY Vector Short Short
ARWP5006

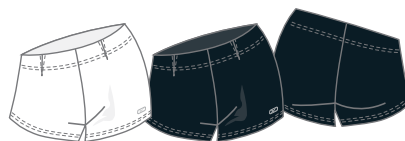
Low rise short short that has a second skin fit, perfect for cross training, yoga class and as a compression short, internal key pocket, reflective heat transfer Vector logo at bottom left hem, inseam: 2", 86/14 polyester/spandex.

Size: XS, S, M, L, XL, XXL

100 white
005 black

Availability Date: 7/1/2006
R0051

Suggested Retail \$30.00

**Poly Full Zip Jacket**
ARWP6014

An all purpose cover up featuring PLAYDRY technology. Color contrast inside hoodie, great cut lines for a flattering fit, two-way front zipper, side zipper pockets, reflective heat transfer Vector logo at bottom left hem, 90/10 polyester/spandex jersey.

Size: XS, S, M, L, XL, XXL

867 clementine
409 athletic navy
005 black
596 opium/citrus yellow*
665 gypsy pink/black*

Availability Date: 7/1/2006, *10/1/2006
R0523

Suggested Retail \$65.00

**Support Training Tank**
ARWP6018

Our most comfortable long bra top that provides coverage so that you can achieve your workout goals and feel supported at the same time. Featuring PLAYDRY technology. Supportive inner shelf-bra, fitted body, reflective heat transfer Vector logo at left chest. 90/10 polyester/spandex.

Size: XS, S, M, L, XL, XXL

444 frost blue
907 camouflage print
867 clementine
409 athletic navy
100 white
515 power purple*
599 tile print*
758 citrus yellow*
665 gypsy pink*
435 bondi blue*

Availability Date: 7/1/2006, *10/1/2006
R0061

Suggested Retail \$32.00

**Short Sleeve Fitted Top**
ARWP5169

Great short sleeve top that provides extra coverage and a great print. Featuring PLAYDRY technology, reflective heat transfer Vector logo at left chest, 90/10 polyester/spandex.

Size: S, M, L, XL, XXL

907 camouflage print
866 tiger orange
005 black
599 tile print*
435 bondi blue*

Availability Date: 7/1/2006, *10/1/2006
R0571

Suggested Retail \$35.00




**PLAYDRY Short Sleeve Interlock
ARWP6019**

The ultimate short-sleeve layering top with wicking capabilities to keep you cool and dry, buttery soft feel against the skin, shaped body for a feminine fit, contrast color piping for a hint of fashion. 100% polyester interlock with PLAYDRY technology.

Size: XS, S, M, L, XL, XXL

444 frost blue/white
867 clementine/tiger orange
409 athletic navy/white
100 white/black
005 black/white
596 opium/pale violet*
758 citrus yellow/opium*
665 gypsy pink/black*
435 bondi blue/black*

Availability Date: 7/1/2006, *10/1/2006
R0521

Suggested Retail \$25.00


**PLAYDRY Sleeveless Interlock
ARWP6020**

Stay dry and cool with this sleeveless layering top. Perfect indoor or outside cardio. Soft hand with a feminine shape, contrast colorblocking, reflective heat transfer Vector logo at left chest, 100% polyester interlock with PLAYDRY technology.

Size: XS, S, M, L, XL, XXL

444 frost blue/athletic navy
867 clementine/white
100 white/adriatic blue
005 black/white
515 power purple/white*
140 white/citrus yellow*
665 gypsy pink/white*

Availability Date: 7/1/2006, *10/1/2006
R0011

Suggested Retail \$22.00


**PLAYDRY Long Sleeve Interlock
ARWP6021**

Our perfect basic long sleeve layering top. Worn layered or alone, this piece has many uses. Feminine cutline through body, wicking capabilities to keep you cool and dry throughout your entire workout. Colorblocking and contrast piping to add pops of color. 100% polyester interlock with PLAYDRY technology.

Size: XS, S, M, L, XL, XXL

444 frost blue/adriatic blue
112 white/shell
866 tiger orange/white
100 white
515 power purple/opium*
758 citrus yellow/power purple*
113 white/gypsy pink*

Availability Date: 7/1/2006, *10/1/2006
R0041

Suggested Retail \$28.00

Notes

Textured Poly Interlock Pant ARWP6025

Just hanging around or on your way to the gym, this soft, lightweight, textured pant is comfortable for almost anything. Great colorblocking for an athletic look. 100% polyester mock eyelet with PLAYDRY technology.

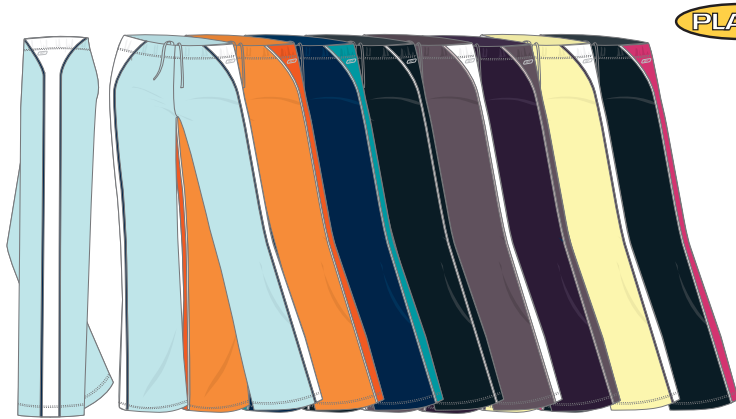
Size: XS, S, M, L, XL, XXL

444 frost blue/white
867 clementine/tiger orange
409 athletic navy/adriatic blue
005 black/white
515 power purple/white*
596 opium/power purple*
758 citrus yellow/white*
008 black/gypsy pink*

Availability Date: 7/1/2006, *10/1/2006

R0002

Suggested Retail \$40.00



Textured Poly Interlock Capri ARWP6026

Get a sporty and fun look with this soft, lightweight, textured capri. Flattering colorblocking to make you feel great, reflective heat transfer Vector logo at bottom hem, 100% polyester mock eyelet with PLAYDRY technology.

Size: XS, S, M, L, XL, XXL

147 shell/white
867 clementine/white
442 adriatic blue/white
002 black/white
515 power purple/citrus yellow*
665 gypsy pink/black*

Availability Date: 7/1/2006, *10/1/2006

R0571

Suggested Retail \$35.00



Textured Poly Interlock Short ARWP6027

These lightweight, cool and flattering shorts are perfect for the cardio machines or a body sculpting class. Built-in brief, soft and breathable fabrication, reflective heat transfer Vector logo at bottom left hem, inseam: 3.5", 100% polyester mock eyelet with PLAYDRY technology.

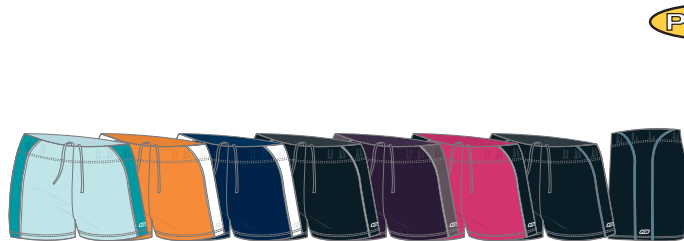
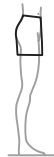
Size: XS, S, M, L, XL, XXL

444 frost blue/adriatic blue
867 clementine/white
409 athletic navy/white
005 black/white
596 opium/power purple*
665 gypsy pink/black*
008 black/bondi blue*

Availability Date: 7/1/2006, *10/1/2006

R0521

Suggested Retail \$25.00



Core Training Updated Velocity Short ARWP6028

This versatile piece offers a soft fabrication against the skin as well as a forgiving fit, perfect for layering a compression short underneath, reflective Vector heat transfer logo at bottom left hem, inseam: 5", 100% polyester dobby.

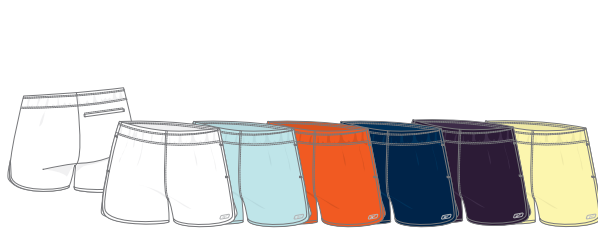
Size: XS, S, M, L, XL, XXL

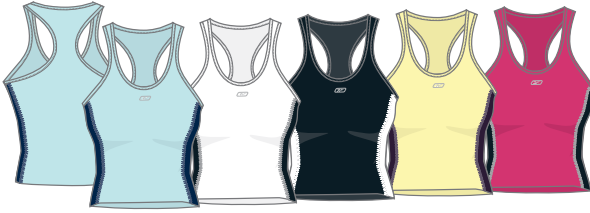
100 white
444 frost blue
866 tiger orange
409 athletic navy
596 opium*
758 citrus yellow*

Availability Date: 7/1/2006, *10/1/2006

R0031

Suggested Retail \$26.00



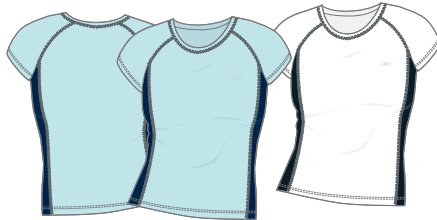

Vector Training Bra Top
ARWP6066

Great basic with added colorblocking, great bra top to be worn alone or with a short sleeve, PLAYDRY technology, reflective logo heat transfer logo at center front, 82/18 polyester/spandex jersey.

Size: XS, S, M, L, XL, XXL
 444 frost blue/athletic navy
 112 white/black
 005 black/white
 758 citrus yellow/opium*
 665 gypsy pink/black*

Availability Date: 7/1/2006, *10/1/2006
R0051

Suggested Retail \$30.00


Vector Training Short Sleeve
ARWP6067

Comfortable, colorblocked basic with flatlock seaming detail, PLAYDRY technology, reflective heat transfer logo at left chest, 82/18 polyester/spandex jersey.

Size: XS, S, M, L, XL, XXL
 444 frost blue/athletic navy
 100 white/black

Availability Date: 7/1/2006
R0051

Suggested Retail \$30.00


Vector Training Long Sleeve Split Neck
ARWP6068

Versatile silhouette for working out or wearing to the gym. Colorblocking detail, flatlock seaming detail, PLAYDRY technology, reflective heat transfer logo at left chest, 82/18 polyester/spandex jersey.

Size: XS, S, M, L, XL, XXL
 444 frost blue/athletic navy
 100 white/black
 758 citrus yellow/opium*

Availability Date: 7/1/2006, *10/1/2006
R0081

Suggested Retail \$36.00


Vector Training Short
ARWP6069

Comfortable short, perfect for layering underneath loose fitting shorts or to wear alone. Colorblocking detail, flatlock seaming, PLAYDRY technology, reflective heat transfer logo at bottom left hem, 82/18 polyester/spandex jersey.

Size: XS, S, M, L, XL, XXL
 409 athletic navy/frost blue
 005 black/white
 596 opium/citrus yellow*

Availability Date: 7/1/2006, *10/1/2006
R0021

Suggested Retail \$24.00

Vector Training Bootcut Capri
ARWP6070

Perfect fitting, comfortable and versatile capri. Colorblocking detail, flatlock seaming, PLAYDRY technology, reflective heat transfer logo at left hip, 82/18 polyester/spandex jersey.

Size: XS, S, M, L, XL, XXL

409 athletic navy/frost blue

005 black/white

596 opium/citrus yellow*

665 gypsy pink/black*

Availability Date: 7/1/2006, *10/1/2006

R0061

Suggested Retail \$32.00

**Vector Training Bootcut Pant**
ARWP6071

Relaxed fitting pant with flatlock seaming detail and colorblocking, good for any activity. PLAYDRY technology, reflective heat transfer logo at left hip, 82/18 polyester/spandex jersey.

Size: XS, S, M, L, XL, XXL

409 athletic navy/frost blue

005 black/white

596 opium/citrus yellow*

Availability Date: 7/1/2006, *10/1/2006

R0522

Suggested Retail \$45.00

**Vector Training Stretch Woven Jacket**
ARWP6072

This stretch woven jacket is an essential, with colorblocking details and front pocket storage, mechanical stretch woven comfortable fabrication, reflective heat transfer logo at left chest, 100% polyester.

Size: XS, S, M, L, XL, XXL

409 athletic navy/frost blue

005 black/white

596 opium/citrus yellow*

008 black/gypsy pink*

Availability Date: 7/1/2006, *10/1/2006

R0572

Suggested Retail \$55.00

**Vector Training Stretch Woven Pant**
ARWP6073

Relaxed fitting stretch woven pant goes perfectly with the stretch woven jacket, back pocket storage, drawstring waistband, reflective heat transfer logo at left hip, 100% polyester.

Size: XS, S, M, L, XL, XXL

409 athletic navy/frost blue

005 black/white

Availability Date: 7/1/2006

R0052

Suggested Retail \$50.00



PLAY DRY

**Compression Mock
ARWS5190**

Tight, sleek fit in a mock neck for cooler weather. PLAYDRY technology offers moisture management and wicking performance, reflective heat transfer logo at left chest, 79/21 polyester/spandex.

Size: XS, S, M, L, XL, XXL

444 frost blue
867 clementine
442 adriatic blue
005 black
515 power purple*
665 gypsy pink*
758 citrus yellow*

Availability Date: 7/1/2006, *10/1/2006
R0051

Suggested Retail \$30.00

PLAY DRY

**Compression Long Sleeve
ARWS5191**

Long sleeve silhouette for cooler weather, perfect for layering, PLAYDRY technology for ultimate moisture management and wicking properties, reflective heat transfer logo at left chest, 79/21 polyester/spandex.

Size: XS, S, M, L, XL, XXL

866 tiger orange
442 adriatic blue
100 white
005 black
596 opium*
758 citrus yellow*
665 gypsy pink*

Availability Date: 7/1/2006, *10/1/2006
R0521

Suggested Retail \$25.00

PLAY DRY

**Compression Short Sleeve
ARWS5192**

The most versatile silhouette in compression, perfect for layering or to wear alone. Tight, sleek fit with an extra soft shell. PLAYDRY technology, reflective heat transfer logo at left chest, 79/21 polyester/spandex.

Size: XS, S, M, L, XL, XXL

444 frost blue
867 clementine
869 tiger orange print
100 white
005 black
913 power purple tiger print*
758 citrus yellow*
665 gypsy pink*

Availability Date: 7/1/2006, *10/1/2006
R0001

Suggested Retail \$20.00

PLAY DRY

**Compression Short
ARWS5194**

Perfect to wear alone or to layer under loose fitting shorts. Close to the skin fit with extra soft shell. PLAYDRY technology, reflective heat transfer logo at bottom left hem, 79/21 polyester/spandex.

Size: XS, S, M, L, XL, XXL

866 tiger orange
442 adriatic blue
005 black
596 opium*
665 gypsy pink*

Availability Date: 7/1/2006, *10/1/2006
R0001

Suggested Retail \$20.00

Prodigy Action Tank
ARWP5128

A lightweight, ultrasoft polyester/spandex, full jersey shelf bra liner, perfect piece for layering, embroidered logo at center front, 82/18 polyester/spandex with PLAYDRY technology.

Size: XS, S, M, L, XL, XXL

442 adriatic blue
869 tiger orange tiger print
866 tiger orange
100 white
005 black
515 power purple tiger print*
665 gypsy pink*
435 bondi blue*

Availability Date: 7/1/2006, *10/1/2006

R0041

Suggested Retail \$28.00

**Prodigy Short Sport Bra**
ARWP5129

A lightweight, ultrasoft polyester/spandex, full jersey shelf bra liner, perfect piece for layering, embroidered logo at center front, 82/18 polyester/spandex with PLAYDRY technology.

Size: XS, S, M, L, XL, XXL

444 frost blue
869 tiger orange tiger print
100 white
005 black
515 power purple tiger print*
758 citrus yellow*

Availability Date: 7/1/2006, *10/1/2006

R0021

Suggested Retail \$24.00

**Prodigy Tight**
ARWP5133

A perfect basic. Lightweight, ultrasoft polyester/spandex with PLAYDRY technology, seaming only on inside of leg, embroidered logo at left hip, 82/18 polyester/spandex.

Size: XS, S, M, L, XL, XXL

005 black

Availability Date: 7/1/2006

R0061

Suggested Retail \$32.00

**Prodigy Bootcut Capri**
ARWP6029

Lightweight, ultrasoft polyester/spandex with PLAYDRY technology, embroidered logo at left hip, 82/18 polyester/spandex.

Size: XS, S, M, L, XL, XXL

005 black

Availability Date: 7/1/2006

R0002

Suggested Retail \$40.00




Team Momentum II Polo
ARMT5114

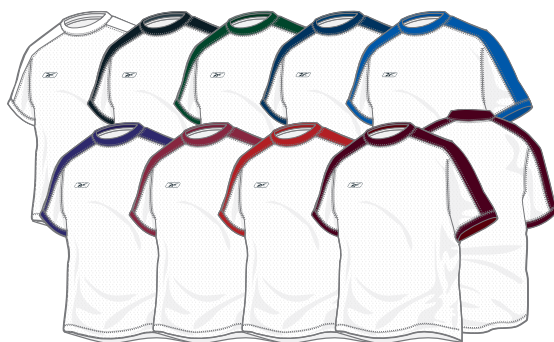
100% polyester interlock with PLAYDRY technology, 100% textured PLAYDRY polyester panels, self-fabric collar, center front zip placket, side slit hem detail, flocked Vector logo treatment.

Size: XXS, XS, S, M, L, XL, XXL, XXXL, XXXXL

100 white/white
 005 white/black
 305 white/team dark green
 417 white/reebok navy
 463 white/reebok royal
 550 white/team purple
 601 white/team cardinal
 620 white/team scarlet
 602 white/team light maroon

Availability Date: at once
R0512

Suggested Retail \$43.00


Team Flex Crew
ARMT5115

100% polyester interlock with PLAYDRY technology, 100% textured PLAYDRY polyester panels, self-fabric collar, side slit hem detail, flocked Vector logo treatment.

Size: XXS, XS, S, M, L, XL, XXL, XXXL, XXXXL

100 white/white
 005 white/black
 305 white/team dark green
 417 white/reebok navy
 463 white/reebok royal
 550 white/team purple
 601 white/team cardinal
 620 white/team scarlet
 602 white/team light maroon

Availability Date: at once
R0071

Suggested Retail \$34.00


Team Flex Short
ARMT5116

100% textured polyester with PLAYDRY technology, elasticized drawstring waist, side seam pockets, contrast piping detail, flocked Vector logo treatment, inseam: 8".

Size: XXS, XS, S, M, L, XL, XXL, XXXL, XXXXL

100 white
 005 black
 305 team dark green
 417 reebok navy
 463 reebok royal
 550 team purple
 601 team cardinal
 620 team scarlet
 602 team light maroon

Availability Date: at once
R0061

Suggested Retail \$32.00

Notes

Team RTL Court Top
ARWT5112

90/10 polyester/spandex with PLAYDRY technology, 88/12 polyester/spandex mesh inserts, internal self bra support, self-fabric v-neck, mesh cuffs, heat transfer non-reflective logo treatment.

Size: XS, S, M, L, XL, XXL

130 white/reebok navy
146 white/reebok royal
112 white/team purple
119 white/team cardinal
113 white/team scarlet
116 white/team light maroon
102 white/black
114 white/team dark green
100 white/white

Availability Date: at once
R0061

Suggested Retail \$32.00

**Team RTL Court Action Tank**
ARWT5113

90/10 polyester/spandex with PLAYDRY technology, 88/12 polyester/spandex jersey lining, 88/12 polyester/spandex inserts, internal self bra support, self-fabric lap neck, shaped hem, heat transfer non-reflective logo treatment.

Size: XS, S, M, L, XL, XXL

417 reebok navy
463 reebok royal
550 team purple
601 team cardinal
620 team scarlet
602 team light maroon
005 black
305 team dark green
100 white

Availability Date: at once
R0061

Suggested Retail \$36.00

**Team RTL Stadium Dress**
ARWT5114

90/10 polyester/spandex with PLAYDRY technology, 88/12 polyester/spandex jersey lining, 88/12 polyester/spandex mesh inserts, internal self bra support, self-fabric lap neck, shaped hem, heat transfer non-reflective logo treatment, outseam from waist: 15.5".

Size: XS, S, M, L, XL, XXL

417 reebok navy
463 reebok royal
550 team purple
601 team cardinal
620 team scarlet
602 team light maroon
005 black
305 team dark green
100 white

Availability Date: at once
R0052

Suggested Retail \$50.00

**Team RTL Stadium Skirt**
ARWT5115

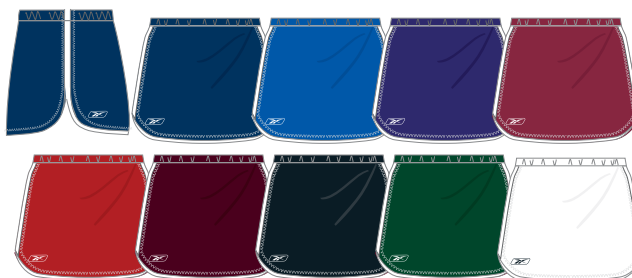
90/10 polyester/spandex with PLAYDRY technology, 88/12 polyester/spandex jersey lining, 88/12 polyester/spandex mesh inserts, elasticized waist, shaped hem, heat transfer non-reflective logo treatment, outseam: 14".

Size: XS, S, M, L, XL, XXL

417 reebok navy
463 reebok royal
550 team purple
601 team cardinal
620 team scarlet
602 team light maroon
005 black
305 team dark green
100 white

Availability Date: at once
R0571

Suggested Retail \$35.00




**Vector Performance Tennis Hat
ARUX6075**

100% polyester uncoated microfiber with PLAYDRY technology, lightweight tennis cap, quick adjust hook and loop closure, color pop front brim detail, embroidered Vector logo at front.

Size: OSFA

100 white/crete/crete
005 black/crete/crete

Availability Date: 7/1/2006
R058

Suggested Retail \$17.00


**Vector Performance Tennis Visor
ARUX6076**

100% polyester uncoated microfiber with PLAYDRY technology, lightweight tennis visor, quick adjust hook and loop closure, color pop front brim detail, embroidered Vector logo at front.

Size: OSFA

100 white/crete/crete
005 black/crete/crete

Availability Date: 7/1/2006
R057

Suggested Retail \$15.00


**Vector Headband / Vector Wristband
ARUX5009 / ARUX5010**

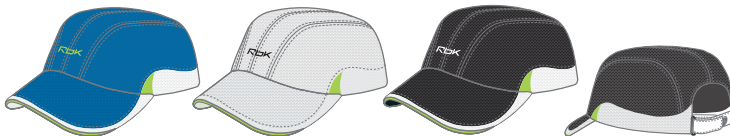
80/12/8 cotton/elastane/nylon, terry 2-ply headband/wristband, embroidered Vector logo.

Size: OSFA

005 black/white
100 white/black
912 crete/black

Availability Date: 7/1/2006
R052, R003

Suggested Retail \$5.00, \$6.00


**Rbk Performance Tennis Hat
ARUX6045**

100% polyester mini pique mesh, lightweight tennis cap, color pop sandwich and front brim detail, quick adjust hook and loop closure, clear rubber Vector pull tab, embroidered Rbk logo at front.

Size: OSFA

912 crete/white/hot green
106 white/hot green/black
005 black/hot green/white

Availability Date: 7/1/2006
R009

Suggested Retail \$18.00


**Rbk Performance Tennis Visor
ARUX6046**

100% polyester mini pique mesh, lightweight tennis visor, color pop sandwich and front brim detail, quick adjust hook and loop closure, clear rubber Vector pull tab, embroidered Rbk logo at front.

Size: OSFA

912 crete/white/hot green
106 white/hot green/black
005 black/hot green/white

Availability Date: 7/1/2006
R008

Suggested Retail \$16.00

Rbk Headband / Rbk Wristband
ARUX6002 / ARUX6003

80/12/8 cotton/elasthane/nylon, terry 2-ply headband/wristband, embroidered Rbk and Vector logo.

Size: OSFA

005 black/white
100 white/black
006 black/hot green
912 crete/white/hot green

Availability Date: 7/1/2006
R053, R004

Suggested Retail \$7.00, \$8.00

**Rbk Premier Mesh Back Adjustable**
ARUX6059

100% tactile front/nylon mesh, 6-panel structured mesh back cap, adjustable snap back closure, embroidered Rbk logo at front, embroidered Vector at left temple logo.

Size: OSFA

409 athletic navy/white
100 white/black
002 black/white

Availability Date: 7/1/2006
R009

Suggested Retail \$18.00

**Rbk Premier Adjustable Visor**
ARUX6062

100% cotton garment washed dobby cord, hook and loop adjustable visor, embroidered Rbk logo at front, embroidered Vector logo on back closure.

Size: OSFA

409 athletic navy/white
106 white/black
002 black/white

Availability Date: 7/1/2006
R008

Suggested Retail \$16.00

**Rbk Premier Structured Flex Hat**
ARUX6058

97/3 cotton/spandex, structured flex cap, interior taping details, raised embroidery Rbk tonal logo with pop color outline at front, embroidered Vector logo at back.

Size: OSFA

409 athletic navy
100 white
005 black

Availability Date: 7/1/2006
R0011

Suggested Retail \$22.00

**Rbk Premier Slouch Adjustable**
ARUX6061

100% cotton garment washed dobby cord, t-slide adjustable slouch cap, embroidered Rbk logo at front, woven Vector loop label at back.

Size: OSFA

409 athletic navy/white
106 white/black
002 black/white

Availability Date: 7/1/2006
R009

Suggested Retail \$18.00




**Women's Tennis Cap
ARWX6042**

100% microfiber polyester with PLAYDRY technology, 7-panel performance cap with quick adjust hook and loop adjustable closure, clear protective overlay at back to help prevent fabric from picking, color pop sandwich detail, wicking sweatband, embroidered Vector logo at front, clear rubber pull tab at back closure for easy adjustment on the fly.

Size: OSFA

005 black/white
106 white/black
444 blue frost/adriatic blue
113 white/gypsy pink*

Availability Date: 7/1/2006, *10/1/2006

R0001

Suggested Retail \$20.00


**Women's Vector Tennis Visor
ARWX6039**

100% polyester with PLAYDRY technology, lightweight tennis visor, 100% polyester (singtex wicking fabric) sweatband, quick adjust hook and loop closure, embroidered Vector logo at front, clear rubber Vector pull tab at back closure.

Size: OSFA

444 frost blue/white
130 white/athletic navy
409 athletic navy/white
515 power purple/white*
112 white/citrus yellow*
113 white/gypsy pink*

Availability Date: 7/1/2006, *10/1/2006

R008

Suggested Retail \$16.00


**Women's Jersey Vector Headband / Wristband
ARWX6049 / ARWX6036**

94/6 cotton jersey/elasthane, headband/ wristband, embroidered Vector logo.

Size: OSFA

100 white/clementine
005 black/white
444 frost blue/white
471 navy/frost blue
116 white/power purple*
112 white/citrus yellow*
113 white/gypsy pink*

Availability Date: 7/1/2006, *10/1/2006

R052, R003

Suggested Retail \$5.00, \$6.00

Notes

**Women's Rbk Tennis Performance Cap
ARWX6027**

100% microfiber polyester with PLAYDRY technology, 7-panel performance cap with quick adjust hook and loop closure with reflective detail, clear protective overlay at back to help prevent fabric from picking, color pop sandwich detail, wicking sweatband, embroidered Rbk and Vector logo at front, clear rubber pull tab at back closure.

Size: OSFA

005 black/white
106 white/black
444 frost blue/tiger orange
515 power purple/alloy*

Availability Date: 7/1/2006, *10/1/2006
R0001

Suggested Retail \$20.00


**Women's Rbk Tennis Performance Visor
ARWX6028**

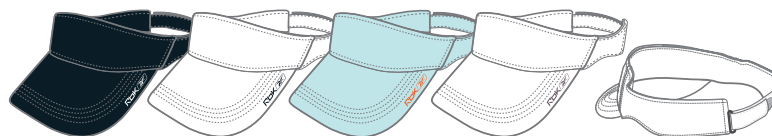
100% microfiber polyester with PLAYDRY technology, lightweight performance visor, quick adjust hook and loop closure, embroidered Rbk and Vector logo on visor, clear rubber Vector pull tab at back closure.

Size: OSFA

005 black/white
106 white/black
444 frost blue/tiger orange
116 white/power purple*

Availability Date: 7/1/2006, *10/1/2006
R008

Suggested Retail \$16.00


**Women's Rbk Headband / Rbk Wristband
ARWX6031 / ARWX6032**

80/12/8 cotton/elasthane/nylon, terry 2-ply headband/wristband, embroidered Rbk and Vector logo.

Size: OSFA

002 black/white
106 white/black
444 frost blue/tiger orange
515 power purple/alloy*

Availability Date: 7/1/2006, *10/1/2006
R053, R053

Suggested Retail \$7.00, \$7.00


**Women's Rbk Headscarf
ARWX6051**

100% polyester, lightweight headscarf, adjustable elastic closure system, screenprinted Rbk and Vector logo at front.

Size: OSFA

005 black/white
110 white/black
515 power purple/alloy

Availability Date: 10/1/2006
R006

Suggested Retail \$12.00




**Team Backpack
ARNY5002**

600d nylon/dobby, zip concealed, collapsible mesh ball pocket, internal organizer, self-correcting nylon coil zippers, dual mesh storage pockets, clip closure top flap pocket, compression straps, padded contoured straps, padded back, embroidered logos.

Size: 17" x 13.5" x 8"

005 black
417 reebok navy
463 reebok royal
429 c. blue
823 torch orange
363 hunter green
623 flash red

Availability Date: at once
R0002

Suggested Retail \$40.00


**V Series Medium Duffel
ARUY5016**

600d octagon nylon, large main compartment, two side pockets, asymmetrical piping design, logoed zipper pull, detachable shoulder strap, inside zip pocket, reflective logo.

Size: 26" x 13" x 13"

005 black/black/silver
417 navy/navy/silver
623 flash red/black
980 ion/athletic navy/silver

Availability Date: at once
R0051

Suggested Retail \$30.00


**V Series Large Duffel
ARUY5017**

600d octagon nylon, large main compartment, two side pockets, asymmetrical piping design, logoed zipper pull, detachable shoulder strap, inside zip pocket, reflective logo.

Size: 33" x 15" x 15"

005 black/black/silver
417 navy/navy/silver
623 flash red/black
980 ion/athletic navy/silver

Availability Date: at once
R0002

Suggested Retail \$40.00

Notes

Vector Cotton Crew 3-Pack
EH49415 / EH39415

75% cotton/14% nylon/8% elastic/2% spandex/1% polyester.

Size: 9 - 11 EH49415**Size: 10 - 13** EH39415

100 white/black logo

005 black/white logo

Availability Date: at once**R056****Suggested Retail \$13.00****Vector Cotton Quarter 3-Pack**
7802QA / EH49414

75% cotton/14% nylon/8% elastic/2% spandex/1% polyester.

Size: 9 - 11 7802QA**Size: 10 - 13** EH49414

100 white/black logo

005 black/white logo

Availability Date: at once**R056****Suggested Retail \$13.00****Vector Performance Crew 3-Pack**
ARMZ3016 / ARMZ3018 / ARMZ3020 / ARMZ3021

89% acrylic/9% nylon/2% spandex, one embroidered logo per sock.

Size: 9 - 11 ARMZ3016**Size: 10 - 13** ARMZ3018**Size: 13 - 15** ARMZ3020**Size: 16 - 19** ARMZ3021

100 white/black logo

005 black/white logo

Availability Date: at once**R0511****Suggested Retail \$23.00****Vector Performance Quarter 3-Pack**
ARMZ3015 / ARMZ3017 / ARMZ3019

89% acrylic/9% nylon/2% spandex, one embroidered logo per sock.

Size: 9 - 11 ARMZ3015**Size: 10 - 13** ARMZ3017**Size: 13 - 15** ARMZ3019

100 white/black logo

005 black/white logo

Availability Date: at once**R0511****Suggested Retail \$23.00**

ANY OFFER TO SELL BY REEBOK AS WELL AS ANY ACCEPTANCE BY REEBOK OF A PURCHASER'S ORDER IS EXPRESSLY MADE CONDITIONAL UPON PURCHASER'S ASSENT TO REEBOK'S AUTHORIZED RETAIL DEALER AGREEMENT AND TO THESE TERMS AND CONDITIONS OF SALE AND NO OTHERS. PURCHASER'S TAKING DELIVERY OF ANY PRODUCT OR PAYMENT OF ANY INVOICE SHALL BE CONCLUSIVE EVIDENCE OF SUCH ASSENT.

Orders: All orders are subject to acceptance by an authorized official of Reebok at Reebok's Corporate Headquarters Office in Canton, Massachusetts. Acceptance by Reebok of an order shall be deemed to occur only upon the tendering of delivery of the products that are the subject of such order to the carrier for delivery to Purchaser. Acceptance by Reebok is limited to the terms stated herein and in the Reebok Authorized Retail Dealer Agreement. Such terms and conditions shall control irrespective of any inconsistent, different or additional terms and conditions, whether printed or otherwise, set forth in any communication from Purchaser to Reebok, including without limitation in any Purchaser purchase order, confirmation, routing guide or manual revision and Reebok hereby rejects any such inconsistent, different or additional terms or conditions unless otherwise specifically agreed to in writing by Reebok. Without limiting the foregoing, Reebok further rejects terms and conditions inconsistent with, different from or additional to those contained herein which are contained on any website of Purchaser for which access is conditioned on acceptance of such terms and conditions. A functional acknowledgement sent on receipt of an electronic order does not constitute acceptance of electronic data interchange orders (see the Reebok Electronic Data Interchange Trading Partner Agreement for further detail).

Minimum Order Size: Orders will not be accepted for a "mark for"/packing level of less than six (6) units.

Prices: No employee, Reebok sales representative or any other party other than an officer of Reebok is authorized to alter Reebok's pricing and other terms and conditions of sale. All prices are subject to change without notice. Orders will be billed at prices prevailing at the time of order as reflected on Reebok's then current price list. Reebok will not recognize any terms outside of its standard programs except as specifically agreed in writing by Reebok. The amount reflected in a Reebok invoice will be deemed accepted and binding upon Purchaser unless Purchaser notifies Reebok in writing of a dispute within thirty (30) days of the date of the invoice.

Payment Terms: Unless otherwise stated on the invoice, terms of payment shall be net thirty (30) days from the invoice date. Purchaser shall not set off against or deduct from any amounts due to Reebok hereunder all or any part of any amounts owed or alleged to be owed by Reebok to Purchaser. Chargebacks will not be accepted by Reebok unless agreed to in writing between Reebok and Purchaser. A service charge of 1 1/2% per month will be charged on all past due invoices plus costs of collection (including attorneys' fees). This is an annual percentage rate of 18%. There are no discounts to customers having an overdue balance. Each order placed by Purchaser and accepted by Reebok shall be considered an independent transaction, and payment therefor shall be due accordingly. If Reebok, in its sole discretion, at any time is unsatisfied with Purchaser's financial responsibility, or feels it needs further assurance that Purchaser will pay for outstanding orders, Reebok shall be entitled to require Purchaser to pay for its orders on a cash-in-advance basis. If Purchaser is in default under any agreement with Reebok, or fails to comply with any written rule or policy of Reebok, Reebok shall have the right, without prejudice to any other legal remedy, of canceling all outstanding orders. Until payment of all obligations of Purchaser to Reebok is received in full, Reebok shall retain a security interest in the goods covered by this order and the proceeds thereof, with Purchaser agreeing to execute all documents which may be necessary or appropriate to protect and perfect Reebok's security interest therein. Reebok shall have the right to set off and deduct any amounts due to Reebok from Purchaser against and from any amounts owed or allegedly owed by Reebok to Purchaser.

Audit Claims: Reebok invoices will not be subject to any audit claim by Purchaser unless Purchaser notifies Reebok within thirty (30) days after the date such invoice is due.

Delivery: All warehouse orders are shipped F.O.B. shipping point (Reebok loading dock). Container dropship orders are shipped F.O.B. port of entry or as otherwise agreed between the parties. All container dropship Purchasers assume ownership of goods upon notification to Purchaser's designated carrier of availability of the container for pickup by facsimile delivery of the delivery order therefore, telephone notification or such other method as is customary for presentation) within the delivery window set forth in Reebok's Trading Partner Guidelines from time to time (or such other guidelines as Reebok may issue) required to meet the "in-store" or other delivery date indicated on the purchase order, or as otherwise agreed between the parties. Unless otherwise directed by Purchaser, Reebok will use the carrier designated by Purchaser. Purchaser is responsible for all payments due to the carrier. Purchaser assumes all risk of loss upon delivery of products by Reebok to Purchaser's carrier in the case of warehouse orders and to the bailee in the case of container orders. Reebok is under no obligation to insure shipments unless specifically requested by Purchaser and then only at Purchaser's expense and valuation.

Reebok reserves the right to make shipments in installments within the delivery window indicated on the purchase order. Reebok will attempt to meet delivery schedules requested by Purchaser. However, all delivery indications are estimates only. In no event will Reebok assume any liability, consequential or otherwise, as a result of Reebok's failure to deliver product in accordance with indicated delivery schedules. Delivery of part of an order does not obligate Reebok to make further deliveries, and partial deliveries will be billed when made.

Changes in Orders: Changes in orders will be considered only (i) within thirty (30) days of order submission in the case of container orders, or (ii) no later than forty-five (45) days prior to the first shipment date indicated on the order in the case of warehouse orders.

Order Termination by Purchaser: Warehouse orders may be cancelled by the Purchaser only upon written authorization from Reebok's Corporate Headquarters Office in Canton, Massachusetts and only will be considered if requested no later than forty-five (45) days prior to the first shipment date indicated on the applicable order. Container orders may not be cancelled. Any exceptions to the foregoing order termination policy with respect to container orders may only be made with the written approval of a Reebok Sales Vice President. Cancellations exceeding 10% of any monthly futures bookings will result in loss of discount. Special make-up orders and custom product orders are not cancellable under any circumstance.

No Transshipments: Reebok sells only directly to selected retail outlets for resale by them only to end users at approved physical retail locations. Proposed sale at any new retail outlet requires advance written approval from an authorized Reebok official of Reebok's Corporate Headquarters Office in Canton, Massachusetts. Resale or transshipment of merchandise to an unauthorized location or to another business is expressly prohibited, violates the terms and conditions of sale and may result in cancellation of existing orders and/or termination of Purchaser's business relationship with Reebok. It is understood and agreed that said prohibition of transshipment includes without limitation sales via the Internet or other media, fulfillment of sales originating from electronic media, as well as sales through mail, direct order or catalogues, unless expressly authorized in writing through a separate contractual agreement with Reebok. Purchaser will not purchase Reebok products from any source other than Reebok.

Change in Ownership: In the event of a sale of or a partial or total change in ownership in Purchaser or any of Purchaser's approved retail outlets, the new owner(s) must apply to Reebok for approval as an authorized dealer and Purchaser will not be eligible to obtain Reebok merchandise until the application is approved in writing by Reebok's Corporate Headquarters Office in Canton, Massachusetts.

Representative Amount of the Line: Reebok sells only to retail outlets which carry a representative amount of the line as deemed appropriate by Reebok in light of the type of retail outlet, the status of Reebok's line or lines of merchandise, and marketing conditions. Failure of a retailer to do so contravenes the terms and conditions of sale and may result in cancellation of existing orders and/or termination of Purchaser's business relationship with Reebok.

Distribution Channels: Reebok reserves the right to limit the distribution of some product lines or segments to certain selected distribution channels.

Design Changes: Reebok reserves the right to discontinue product lines and to make changes offered in products at any time.

Allocations: Acceptance of orders and shipments are subject to allocation by Reebok in times of product shortages in response to factors deemed most appropriate by Reebok at the time.

Merchandising of Products: Purchaser agrees to (a) provide prompt, courteous service to its Reebok consumers using personnel trained in the selling and servicing of athletic products and Reebok products in particular; and (b) merchandise Reebok products consistent with guidelines established by Reebok including with respect to the in-store display of Reebok products.

Shortages: All claims for lost or damaged shipments (a) with respect to warehouse orders, must be made directly to the delivering carrier, and (b) with respect to containers, must be made in accordance with Reebok's claims policy, a copy of which is available on request. Shortages due to packing errors must be reported to Purchaser's Reebok Account Service Representative in Canton, Massachusetts within fifteen (15) days of receipt in the case of shortages in cartons and within thirty (30) days of receipt in the case of concealed shortages.

Return Goods Policy: All returns, including the product assortment and quantity to be included as a return, are subject to pre-authorization by Purchaser's Reebok Account Service Representative at Reebok's Corporate Headquarters Office in Canton, Massachusetts. Defective and return to stock items must be authorized and returned separately. Upon approval by Reebok, a Return Authorization Number and, if requested, Label, which must be clearly affixed to the outside of the carton will be issued to the customer. Purchaser is responsible for freight and handling charges on returns of any product other than authorized defective merchandise. Purchaser must follow Reebok's Returns Guidelines to ship authorized defective returns under Reebok's freight carrier contracts. Freight for defective merchandise that is shipped under the Purchaser's freight contracts is not accepted as a deduction on product invoices and is not accepted for reimbursement. Returns not carrying the Reebok Return Authorization Number will be refused delivery by Reebok and will be returned to the Purchaser. Reebok is not responsible for freight charges resulting from unauthorized returns. Merchandise must be returned in the same salable condition as received. Credit will not be issued for any product items or quantities other than as specifically included in the pre-authorization. All returns must be shipped to Reebok in accordance with Reebok's Routing Guide for return freight. With defective merchandise, the customer's account will be credited at full value. First quality returns will be credited to the customer's account at full value less a fifteen percent (15%) restocking charge. Shipments refused by the Purchaser will be credited at full value if the shipment error is by Reebok. Shipments refused for reasons not attributable to Reebok will be credited at full value less fifteen percent (15%) restocking charge. Reebok reserves the right to assess a charge on return shipments for the removal of any pre-ticketing.

Customer Routing and Logistic Requirements: Reebok will not be bound to terms, directives or requirements set forth by Purchaser through Routing and Logistic Guides unless Reebok has agreed in writing to such terms, directives or requirements. In addition, Purchaser may incur charges for value added services (labeling, ticketing, and special packaging). Routing and Logistic Manuals should be directed to the Compliance Department located at Reebok's corporate headquarters office in Canton, Massachusetts.

Limited Warranty: Reebok warrants that its products, at the time of shipment, are free from defects in workmanship and materials. THE WARRANTY DESCRIBED IN THIS PARAGRAPH SHALL BE IN LIEU OF ANY OTHER WARRANTY, EXPRESS OR IMPLIED, INCLUDING BUT NOT LIMITED TO, ANY IMPLIED WARRANTY OF MERCHANTABILITY OR FITNESS FOR A PARTICULAR PURPOSE. Purchaser's remedies are exclusively limited to replacement of or credit for any defective product (at the option of Reebok) but such replacement or credit shall be made only if the Purchaser follows the terms and conditions set forth herein under the "Return Goods Policy" section.

Production Standards: Products covered by any Reebok invoice are produced and furnished in accordance with the Reebok Human Rights Production Standards, a copy of which is available on request made to Reebok.

Limitation of Liability: REEBOK ASSUMES NO LIABILITY EXCEPT AS EXPRESSLY PROVIDED IN THESE TERMS AND CONDITIONS AND IN NO EVENT WILL REEBOK BE LIABLE FOR LOSS OF PROFITS, INTERRUPTION OF BUSINESS OR ANY OTHER SPECIAL INDIRECT, INCIDENTAL, OR CONSEQUENTIAL DAMAGES, WHETHER ARISING IN CONTRACT, IN TORT, UNDER WARRANTY OR OTHERWISE.

Force Majeure: If a delivery date is specified, that date will be extended to the extent that delivery is delayed by reason of fire, flood, war, riot, strike, natural disaster, or any other event beyond Reebok's reasonable control and if, as a result of such a delay, the goods ordered are unavailable, Reebok may substitute comparable goods.

General: This contract shall be construed and enforced in accordance with the laws of Massachusetts. The Massachusetts courts (state and federal) will have exclusive jurisdiction of any controversy between Purchaser and Reebok, and no court action may be brought by either party against the other outside of Massachusetts. Both Reebok and Purchaser waive their right to jury trial in any controversy or court action between them. Any action for breach of contract must be commenced within one (1) year from the date of the delivery of the goods. Purchaser's rights under this contract may not be assigned, transferred, or sold by Purchaser without the prior written consent of Reebok, and such assignment will be void. Reebok may assign this contract only to a parent, subsidiary, or affiliated firm, or to another entity in connection with the merger, sale or transfer of all or substantially all of its business. Subject to these restrictions, the provisions of the contract shall be binding upon and inure to the benefit of the parties, their successors, and permitted assigns. Terms and conditions are subject to change by Reebok without prior notice. The Reebok Authorized Retail Dealer Agreement and these terms and conditions of sale constitute the entire agreement between the parties with respect to the subject matter hereof and supercede all previous agreements or understandings between the parties with respect thereto. No additions to, deletion from, or modification of any of the provisions herein shall be binding upon Reebok unless made in writing and signed by a duly authorized representative of Reebok, the terms and conditions herein being final, complete and exclusive statement of terms of agreement between Reebok and Purchaser.

CORPORATE OFFICE

Reebok International Ltd.

1895 J.W. Foster Boulevard

Canton, MA 02021

781-401-5000

TEAM CUSTOMER SERVICE

888-405-TEAM

(888-405-8326)

SIZE CHARTS

MEN

	S	M	L	XL	XXL
Chest	35-37	38-40	41-44	45-48	49-55
Waist	29-31	32-34	35-38	39-41	42-45
Hip	36-38	39-41	41-44	45-49	50-54
Inseam	30	31	32	33	33

WOMEN

	XS	S	M	L	XL
Size	4	6	8/10	12/14	16
Chest	30-32	33-34	35-37	38-40	42-45
Waist	21-23	24-25	26-28	29-31	32-34
Hip	31-33	34-35	36-38	39-41	42-45
Inseam	29	30	31	32	33

Estimated body size ranges.
Not actual garment measurements.

Sales Offices

TERMS & CONDITIONS

Reebok Customer Service
888.405.TEAM
(888.405.8326)



www.reebok.com
Reebok International Ltd. 1895 J.W. Foster Boulevard
Canton, MA 02021 1.781.401.5000

